

1) CONSTRUCTION:

CONDUCTOR: 28 AWG 7/36 STRANDED TINNED COPPER  
 INSULATION: HIGH DENSITY POLYETHYLENE, .005" NOM. WALL THICKNESS  
 PAIRS: COLOR CODED SINGLES TWISTED INTO PAIRS  
 CABLE: (4) TWISTED PAIRS TWISTED TOGETHER TO FORM A CABLE CORE  
 JACKET: LOW SMOKE ZERO HALOGEN, (COLOR, PER CHART 1), .020" NOM. WALL THICKNESS OVERALL CABLE DIAMETER

NOM. DIA.  
 .015"  
 .0245" ± .001"  
 .049"  
 .150" NOM  
 .155" MAX  
 (BY CALIPER)

2) PHYSICAL PROPERTIES:

TEMPERATURE RATING, MAX. 75°C  
 TEMPERATURE RATING, MIN. -20°C  
 WT./M', NOM., NET. 11.3 LBS.

CHART 1:

QUABBIN P/N	JACKET COLOR
2260	BLACK
2261	RED
2262	ORANGE
2263	YELLOW
2264	GREEN
2265	BLUE
2266	VIOLET
2267	GRAY
2268	WHITE
2269	PINK

3) ELECTRICAL CHARACTERISTICS:

SEE PAGE 2

4) AGENCY APPROVALS:

NEC (UL) TYPE CM-ST1  
 CEC C(UL) TYPE CM

5) APPLICATION:

RoHS COMPLIANT MATERIALS. MEETS TIA 568.2-D CHANNEL REQUIREMENTS AT 53 METERS. 6.5 METERS OF PATCH CABLE WITH A 90 METERS PERMANENT LINK (96.5 METER CHANNEL) OR 10 METERS OF PATCH CABLE WITH AN 84 METER PERMANENT LINK (94 METER CHANNEL)

6) PRINT: (WHITE INK ON BLACK JACKET, ALL OTHERS BLACK INK)

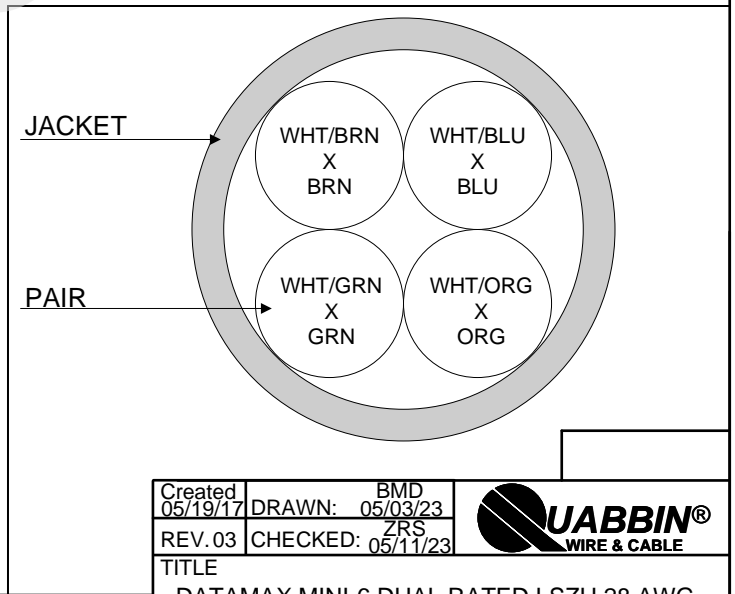
QUABBIN DATAMAX LSZH MINI-6 U/UTP PATCH CORD P/N (QWC P/N PER CHART 1) -- CM C(UL)US CM-ST1 28 AWG 75C -- RoHS -- (LOT DESIGNATOR) (SEQUENTIAL FOOTAGE)

7) COLOR CODE:

1. WHITE/BLUE X BLUE
2. WHITE/ORANGE X ORANGE
3. WHITE/GREEN X GREEN
4. WHITE/BROWN X BROWN

8) PUT UPS

TO BE PACKAGED AS PER QWC'S STANDARD PACKAGING



CUSTOMER APPROVAL:

DATE:

Created 05/19/17	DRAWN: BMD 05/03/23	
REV. 03	CHECKED: ZRS 05/11/23	
TITLE DATAMAX MINI-6 DUAL RATED LSZH 28 AWG CAT 6 U/UTP PATCH CABLE -- TYPE CM-ST1		
DRAWING#	QWC0103	1 of 2

3) ELECTRICAL CHARACTERISTICS:


CAPACITANCE, MUTUAL, NOM.	13.5 PF/FT. AT 1 MHz
DIELECTRIC WITHSTANDING, MIN.	1500V RMS
VOLTAGE RATING, MAX.	300V
D.C. RESISTANCE, NOM.	22.4 Ω/100m (68.2 Ω/1000')

**NOTE:** TESTING FOR THE FOLLOWING IS CONDUCTED OFF THE REEL, USING 100m LENGTHS

IMPEDANCE	100 ± 15 Ω	1 - 250 MHz
IMPEDANCE, SMOOTHED	100 ± 10 Ω TYPICAL	5 - 250 MHz
RETURN LOSS	1 ≤ f < 10 MHz	20 + 5 LOG (f) dB MIN
	10 ≤ f < 20 MHz	25 dB MIN
	20 ≤ f ≤ 250 MHz	25 - 8.6 LOG(f/20) dB MIN
PS NEXT	1 ≤ f ≤ 250 MHz	42.3 - 15 LOG(f/100) dB MIN
NEXT	1 ≤ f ≤ 250 MHz	44.3 - 15 LOG(f/100) dB MIN
PSACRF	1 ≤ f ≤ 250 MHz	24.8 - 20 LOG(f/100) dB MIN
ACRF	1 ≤ f ≤ 250 MHz	27.8 - 20 LOG(f/100) dB MIN
INSERTION LOSS	1 ≤ f ≤ 250 MHz	1.87 [1.808 √f + 0.017(f) + 0.2/√f ] dB MAX
DELAY	1 ≤ f ≤ 250 MHz	534 + 36/√f ns MAX
DELAY SKEW	1 ≤ f ≤ 250 MHz	<45 ns MAX
TCL	1 ≤ f ≤ 250 MHz	30 - 10 LOG(f/100) dB MIN
ELTCTL	1 ≤ f ≤ 30 MHz	35 - 20 LOG(f) dB MIN
VELOCITY OF PROPAGATION	68%	

CUSTOMER APPROVAL:

DATE:

Created 05/19/17	DRAWN: BMD 05/03/23	
REV.03	CHECKED: ZRS 05/11/23	
TITLE DATAMAX MINI-6 DUAL RATED LSZH 28 AWG CAT 6 U/UTP PATCH CABLE -- TYPE CM-ST1		
DRAWING#	QWC0103	2 of 2